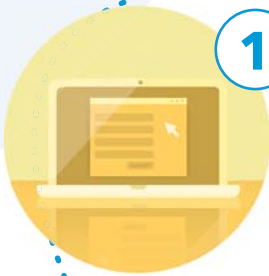


Steps to Obtain a Visa to Study at GW's School of Business

Congratulations - you've been admitted to a graduate program at the School of Business (GWSB) at the George Washington University!

Now you must begin the process to obtain a visa to study in the United States. Our office will work with you each step of the way to help you obtain an I-20 or DS-2019 form needed to request your F-1 or J-1 visa from the U.S. government. **Please note: Most students require an I-20 for an F-1 visa. If you require a J-1 visa, use the same steps below to obtain a DS-2019.*

Please follow the steps below:



1

Pay the admissions deposit online

You will receive an email with instructions on paying the required deposit online. This amount is applied toward your first semester's tuition bill and is non-refundable.



Wait **2-3 business days** for the system to process your deposit and for our office to confirm payment



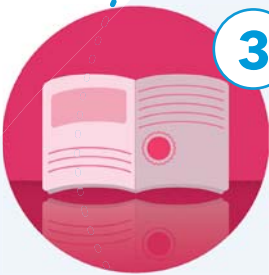
2

Respond to your admissions offer

Submit an Intent to Enroll form online. You can find the link to the form on your admissions offer letter.



Wait **2-3 business days**



3

Submit visa documents

Once your deposit is confirmed, our office will contact you by email to request the documents needed to obtain your I-20.

- If you provided these documents with your application, they will be reviewed and you will be contacted only if changes are needed.
- If you did not provide these documents with your application, you will be contacted by email with a list of documents that we need from you in order to begin the visa process.
- All documents should be sent to sbglobal@gwu.edu.



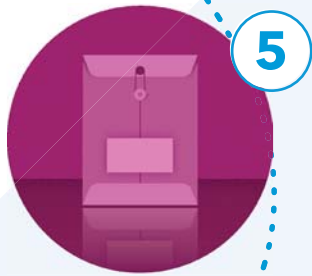
4

Wait 12-15 business days

Once your documents are complete and approved by our office, they will be submitted to the GW International Services Office (ISO) to be processed for the creation of your I-20. This process takes approximately 12-15 business days, so please be patient. If further information is needed from you, you will be contacted by email.



Wait **12-15 business days**



5

I-20 received by GWSB: Provide address

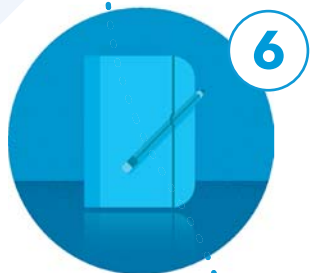
Once your I-20 has been created by the ISO and picked up by our office, we will contact you by email to obtain the address you would like us to send you your I-20.



Wait 1 week

Please note the following:

Once the shipping label has been created through the courier and received by our office, your I-20 will be sent. You will receive an email with a tracking number to track your I-20 delivery.



6

Make an appointment for your visa interview

In the same email containing the I-20 tracking number, you will also receive a SEVIS number, school code, and other information that you may use to schedule a visa interview at your local U.S. embassy or consulate.

- We strongly encourage you to schedule your visa interview soon after you receive confirmation of your I-20 being shipped. You do not need the I-20 in your possession in order to schedule the interview.
- Once your interview is complete, all remaining parts of the visa process will be managed by the U.S. government. Our office will not be able to provide any further information regarding your visa status or issuance.
- More information:
 - For I-20 (F-1) visa interviews:**
<https://studyinthestates.dhs.gov/2015/06/five-ways-to-prepare-for-your-visa-interview>
 - For DS-2019 (J-1) visa interviews:**
<https://j1visa.state.gov/participants/how-to-apply/interviews-documents/>
 - Visa Wait Times:**
<https://travel.state.gov/content/travel/en/us-visas/visa-information-resources/wait-times.html>

— YOU ARE —
Welcome
— HERE —



#YouAreWelcomeHere

Questions:

If you have any questions regarding any of these steps, please contact sbglobal@gwu.edu.

Global & Experiential Education
Department

The George Washington University

@sbglobal@gwu.edu

+1) 202-994-0767

School of Business

THE GEORGE WASHINGTON UNIVERSITY