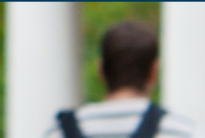




**THE GEORGE WASHINGTON UNIVERSITY SCHOOL
OF BUSINESS EXCHANGE STUDENT EXPERIENCE**



EXCHANGE STUDENT FACT SHEET 2020-2021

This fact sheet provides information for prospective graduate exchange students to help prepare them for a semester in Washington, D.C.

Global & Experiential Education Office

THE GEORGE WASHINGTON UNIVERSITY, SCHOOL OF BUSINESS

2201 G Street NW; Duques Hall, Suite 550
Washington, D.C. 20052; United States of America
+1.202.994.0767; sbintl@gwu.edu
<http://business.gwu.edu/global>



EXCHANGE PARTNERSHIP DEVELOPMENT

Bryan Andriano | Executive Director | andriano@gwu.edu



EXCHANGE PROGRAM MANAGER

Bradley Miner | Program Manager | bradminer@gwu.edu



CONTACT FOR INCOMING EXCHANGE STUDENTS

Marie Balo-Lou | Coordinator | marielbalo@gwu.edu

Semester Dates

The academic year is divided into two semesters, which are outlined below. The duration of classes vary according to the course schedule. **All exchange students are required to participate in the two orientations that take place prior to the start of the semester.**

Fall Semester

24 August - 25 August 2020	International Student Orientations
31 August - 12 December 2020	Fall Semester
14 December - 22 December 2020	Final Examinations*

Spring Semester

4 January - 5 January 2021	International Student Orientations
11 January - 26 April 2021	Spring Semester
3 May - 11 May 2021	Final Examinations*

*Please note that final examinations may take place the last day of the exam period and cannot be adjusted or moved up due to departure flights. Students are strongly encouraged to make their flight arrangements with these dates in mind.



EXCHANGE PROGRAM EXPERIENCE

WHY CHOOSE GWSB?

Global Recognition:

The George Washington University School of Business is AACSB accredited and recognized for **scholarly research, teaching excellence,** and **innovative curricula,** focused on the **responsible management** of organizations in the global environment.

Rankings:

GWSB's **MBA program is ranked 5th worldwide** for International Business in the publication's "MBA 2019: the top MBA programmes in selected categories" ranking and our **full-time MBA program is ranked in the top 50 nationwide** in the Bloomberg Businessweek 2019 rankings.

Key Strengths:

Diverse Academic Offerings—We offer five MBA programs and 11 specialized masters programs. Exchange students may enroll in graduate-level coursework in our MBA program and many of our Specialized Masters programs.

Location—We are located blocks from the White House, the State Department, World Bank, International Monetary Fund, as well as the headquarters and offices of thousands of national and multinational corporations, nonprofits, and nongovernmental organizations. For exchange students, it means an extraordinary opportunity to be involved in current international and national debates and to engage with prominent global leaders and business executives.

Global Focus—GWSB is renowned for our International Business Department. Our students come from across the globe to build their business acumen with 584 graduate international students representing 60 countries. Leveraging our global reach, we send over 300 graduate students abroad each year on academic programs.

Flexibility—Exchange students have the opportunity to take graduate-level courses across the School of Business and the entire university in areas such as: international affairs, economics, public policy, and political management.

Integration—Exchange students are paired with a student ambassador prior to their arrival, have access to specific programming, career center workshops, and may join any of GWSB's student organizations.

Application for Exchange

Eligibility for Exchange to GWSB

Prospective students are required:

- To be officially registered students at one of our partner universities
<https://business.gwu.edu/academics/programs/international/study-abroad/long-term>
- To be in good academic standing
- To be nominated by their home university
- To have advanced or fluent English language abilities

International applicants from countries in which English is not the official language must meet or exceed the exam scores as outlined below:

- TOEFL internet exam (iBT): 100
- TOEFL administered paper exam: 600
- Academic IELTS: Overall band score of 7.0, with no individual band score below 6.0
- Pearson Test of English (PTE) Academic: 68

Official scores are considered valid up to two years from date of testing

The TOEIC and the Institutional TOEFL are not accepted by the George Washington University.

Application Process:

Inbound exchange students spend one fall semester (August - December) or one spring semester (January - May) as non-degree students at GWSB. Exchange students do not earn a Masters degree from GW—they enroll in regular graduate-level classes.

Step 1:

Contact the Exchange Coordinator at your home university.

Step 2:

Approved students are nominated by the Exchange Coordinator to GWSB.

Step 3:

Complete GW's Inbound Exchange Student application through the online application portal, GW Passport.

Application Materials

- GWSB Exchange Student Application
 - Includes statement of purpose and resume/C.V.
- Application Verification (Electronic Signature Document)
- Official Academic Transcript
- Proof of English Language Competency (if applicable)
- Passport Biographical Information
- Proof of Funding
- Visa Request for International Applicants

Note: Greater details about these application documents are outlined in GW Passport, which is made accessible to students after their nomination is confirmed

Step 4: Upload application documents to GW Passport by the application deadline. GW upholds the right to request the original copy of any uploaded application material. *Please retain original copies of all application materials!*

Step 5: A GWSB administrator will contact you about the results of your application.

Exchange Deadlines:

Semester	Nomination Deadline	Application Deadline
Fall	March 15	April 1
Spring	September 15	October 1

Courses/Curricula

- The GWSB offers a wide variety of graduate-level business courses through its MBA and specialized master's degree programs
- Exchange students are eligible to take courses numbered 6000 or above in schools or departments throughout the George Washington University, except those in the School of Medicine and Health Sciences, the Law School, and certain courses with specific prerequisites or that are restricted to students seeking specific degrees
- All coursework should be approved by the home university to ensure compliance with the requirements of students' home degree program
- Exchange students typically take a full course load of 9-12 credits, but may take 13-15 credits if approved by their home institution
- Exchange students are required to enroll in at least 3 credits of coursework in the School of Business. The departments in the School of Business are found on our website: business.gwu.edu/academics/departments
- If admitted students have questions about courses, they should contact Global & Experiential Education, at sbintl@gwu.edu or +1.202.994.0767

Visas

Upon acceptance as an international exchange student, GW will provide the appropriate documentation for students to apply for a student visa at their local U.S. Embassy or Consulate. The visa application process can be time-consuming. **It is essential that students send complete materials by the application deadline in order to not delay obtaining their visa.** Exchange students should allow ample time for visa processing by the U.S. Embassy in their home country.

Health

Health Insurance

Exchange students are **automatically enrolled** in the GW Student Health Insurance plan that meets University and J-1 exchange visa requirements. Students with a plan that meets the University and J-1 visa requirements are able to request to waive the GW Student Health Insurance plan. The online waiver must be completed prior to the established deadline, or students will be charged for the GW Student Health Insurance plan. Please visit the following sites for more information:

Student Health Services:
studenthealth.gwu.edu/student-health-insurance

International Services Office:
internationalservices.gwu.edu

Aetna Health Insurance:
www.aetnastudenthealth.com
(Search "The George Washington University")

Immunizations

Washington, D.C., requires that **all students under the age of 26** have a record on file with the Colonial Health Center documenting vaccinations to Measles, Mumps, Rubella, Varicella, Hepatitis B and a current Tetanus/Diphtheria booster. The Meningococcal Vaccine or waiver is also required. Students should consult with their physician AT LEAST one month prior to arrival regarding the required immunization form and vaccinations, if required. Not beginning this process prior to arrival could result in delayed receipt of official transcripts. Visit the SHS website for more information and the most current forms:

healthcenter.gwu.edu/immunizations

Location

One of the GWSB's advantages is its location in downtown Washington, D.C. The School of Business is located on GW's Foggy Bottom campus in Duquès Hall and Fungler Hall at 2201 G Street NW, Washington, D.C. 20052. The Foggy Bottom campus is easily accessible by metro and bus.

Approximate Living Costs

The following is an estimated cost of living for an exchange student in Washington, D.C. for one semester and expressed in US\$. Student expenses vary greatly based upon housing and lifestyle.

Housing, Meals, Transportation, Personal Expenses	\$10,425
Health Insurance*	\$1,100 - \$1,650
Books & Supplies	\$250
Total**	\$11,775 - \$12,325

Notes:

* Health insurance cost varies from the fall to the spring semester. Final cost will be communicated when students are nominated by host institution.

** Exchange students' costs do not include any tuition or fees to the George Washington University since they will pay their home university's tuition.

Accommodation

Exchange students must make their own housing arrangements. On-campus graduate student housing is available at GW, but is very expensive. Students may consult the following resources for further information:

GW Off-Campus Housing:
offcampus.students.gwu.edu

The International Student House:
ishdc.org

Graduate Student Housing:
living.gwu.edu/graduate-students

Student Services

Each semester Global & Experiential Education organizes events specifically for GWSB exchange students. In previous years exchange students have visited the World Bank, the White House, and the International Monetary Fund. Students are matched with local GW student "ambassadors", to help them navigate student life at GW. These ambassadors are invited to attend all events with the exchange students.

Career Development

The F. David Fowler School of Business Career Center provides career advising services to all GWSB students, including exchange students. Recruiting events are restricted to GWSB degree-seeking students, however, exchange students may request assistance with resumes, interviews, and other advising services for preferred careers. Because of restrictions on foreign nationals working in the United States, international students are encouraged to first talk with the GW International Services Office about the employment guidelines for their particular visa type.

International Services Office (ISO)

In addition to hosting the International Student Orientation, the ISO serves as the primary administrative, programming, and advising office for the GW international community. International students in the GWSB consult with a specific advisor in the ISO during their stay.

Campus Life

There are always a host of activities going on in the George Washington University community. Students can visit studentengagement.gwu.edu/graduate-distance-professional-students for more information.





GW Summer*

Outside of the exchange agreement with the George Washington University School of Business, the following opportunities are available to students from partner institutions.

General Study Program:

The General Study program offers graduate and undergraduate students the opportunity to build their own program of study. Over 650 course offerings are available, and include fields of study in the arts, sciences, humanities, social sciences, business, and engineering. More information is available at summer.gwu.edu/international or by email at gwsummer@gwu.edu.

English Language Study:

The English for Academic Purposes program teaches graduate and undergraduate students the critical thinking, research and writing skills that form the basis of success in the academic and professional worlds. This 6-week program is available from July to mid-August. Email gwsummer@gwu.edu or visit summer.gwu.edu/international for more information.

U.S. Foreign Policy in a Global Era Institute:

GW's Elliott School of International Affairs leverages the George Washington University's location in the heart of Washington, D.C., to offer a two-week, 3 credit program that includes visits to key institutions and lectures from experts on U.S. Foreign Policy. This program is open to graduate and select advanced undergraduate students. For more information, visit: www.gwu.edu/~usfp

*Students who participate in GW summer programs are responsible for paying tuition, fees, and living expenses to GW. Students from partner institutions who participate in GW summer programs are eligible for a reduced rate, however, participants from partner institutions do not count towards exchange balances with the GW School of Business.