



## Newsletter Three: Healthcare

Hello! This newsletter covers topics related to healthcare, health insurance, and immunizations.

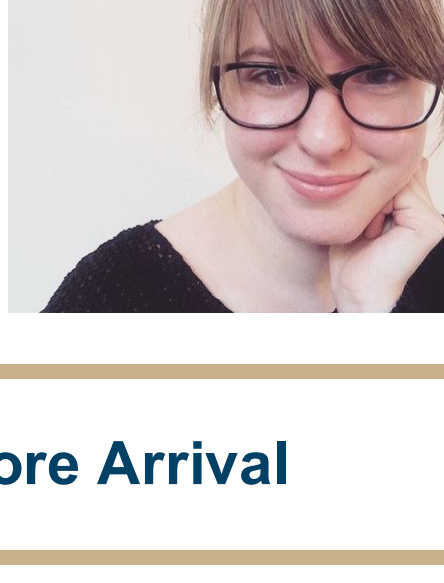
- Healthcare: Before Arrival
- Healthcare: After Arrival
- Upcoming Events - New **Pre-Arrival Q&A Session** Listed!

If you have any questions, please email me at [sbglobal@gwu.edu](mailto:sbglobal@gwu.edu).

I look forward to meeting you all in August!

Best,

Elisa Becker  
Program Associate  
International Student Services  
[sbglobal@gwu.edu](mailto:sbglobal@gwu.edu)



## Healthcare: Before Arrival

Note that all the information in this newsletter can be accessed online on the [GW Medical Services](#) website.

If you have any questions regarding GW Health Services, contact [chcadmin@gwu.edu](mailto:chcadmin@gwu.edu) or call 202-994-5300.

### Pre-Arrival COVID Vaccine Requirements

As you should already know, GW requires all students, faculty, and staff to be fully vaccinated and boosted against COVID-19, unless they receive a valid exception. To verify that you are fully vaccinated and boosted, you need to follow [these instructions](#) to upload your vaccine documentation to the [GW Medical Portal](#). COVID vaccine approval is a manual process, and it can take up to a week for your record to be updated to indicate your vaccination status - please be patient!

**Note: You will not be able to register for in-person Fall 2022 classes until you have uploaded your COVID-19 vaccine information and it has been approved.**

If you are **currently unvaccinated**, and will be **unable to receive a COVID vaccine prior to the start of the Fall semester**, please contact our team at [sbglobal@gwu.edu](mailto:sbglobal@gwu.edu) **immediately**.

Your country may be subject to additional COVID-related entry restrictions or requirements, so be sure to check your Embassy's webpage for any extra requirements before you board your flight.

### Important Note

All COVID-related information in this newsletter is **subject to change** as new regulations and requirements are enacted.

For the most up-to-date information on government-mandated requirements for non-immigrants traveling to the U.S., visit the [CDC's Non-U.S. Citizen, Non-U.S. Immigrants Air Travel](#) page.

The latest news on GW's COVID-19 policies and regulations can be found on the [GW Coronavirus Response](#) and [Onward GW](#) pages.

### Additional Immunization Requirements

All students **under the age of 26**, are required to submit proof of certain immunizations (in addition to your COVID-19 vaccination documentation) to the Colonial Health Center. The list of required immunizations (and instructions on how to submit your immunization record) can be found on the [Colonial Health Center Immunization](#) page.

To request an exemption, visit the [Colonial Health Center Immunization](#) page and view the "Medical or Religious Exceptions" dropdown.

**YOUR IMMUNIZATION RECORDS ARE DUE TO MEDICAL SERVICES BY AUGUST 1, 2022.**

**Failure to submit the required immunization records will result in a hold on your student account that prevents you from registering for classes.**

Please retain a copy of your immunizations for your records. It is each student's responsibility to ensure that they obtain their immunization records and that it is submitted to Student Health by the deadline.

If you have any questions regarding immunizations, email [immunreg@gwu.edu](mailto:immunreg@gwu.edu).

## Healthcare: After Arrival

### How Does U.S. Healthcare Work?

The U.S. healthcare system probably looks a lot different than what you're used to! Get an overview of how the U.S. healthcare system works by watching this short, six-minute video:

[Overview of the U.S. Healthcare System for International Students](#)  
(Video Credit: International Student Insurance)

### Required Coverage

All international students in F-1 or J-1 immigration status are required to have an maintain health insurance coverage for the duration of their GW studies. As an F-1 or J-1 student, GW will automatically enroll you in the GW Student Health Insurance Plan (SHIP) through Aetna Student Health. The cost of insurance coverage will be added onto your bill for tuition, fees, and other university expenses.

Visit the following pages for information about the GW Student Health Insurance Plan:

- [GW Colonial Health Center Health Insurance](#)
- [SHIP Frequently Asked Questions](#)
- [Health Insurance Requirement for International Students in F-1 or J-1 Immigration Status](#)
- [Aetna Student Health Plan Design and Benefits Summary](#) - Very detailed document with in-depth information about the specific features and coverage included in the GW Student Health Insurance Plan.

For questions, email [ship@gwu.edu](mailto:ship@gwu.edu) or call University Health Plans at 1-833-251-1721.

### Application for Exemption

Upon arrival on campus, and after registration, you have the right to request that 1) you not be covered by SHIP, and 2) the charge for Health Insurance on your GW bill be removed.

You may request this by:

1. Completing an exemption or waiver application through the [University Health Plans website](#); and
2. Providing documents that prove you have health insurance under a different plan that satisfies the minimum requirements. The minimum insurance requirements can be found here: [Student Health Insurance Waiver Requirements](#).

Additional information about waiving SHIP and the waiver process can be found on the [University Health Plans website](#) under the "Waiver Process" header.

**The Fall 2022 waiver form will be available in late July and will be due in late Summer.** There is no appeal to waive coverage after the waiver deadline.

### Using Your Plan

Unless you waive GW's Student Health Insurance Plan (SHIP), you will automatically be enrolled in SHIP. So how do you use SHIP?

#### What do I do if I'm feeling sick?

If you need to see a doctor, you should first seek treatment at the [GW Student Health Center](#), which is located on campus and is open Monday - Friday from 8:30am - 5:00pm.

#### I need medical assistance outside of those hours. What do I do?

The Medical Assistance Line, (202) 994-5300, is available 24 hours a day, seven days a week. Call to speak with a clinician and be evaluated for next steps, which can include a telemedical appointment, an in-person office visit, or a referral to an off-site medical provider.

#### But what if I need to see a doctor or a specialist that isn't associated with the GW Colonial Health Center?

To find providers outside of GW Student Health Services that accept SHIP, please visit [Aetna Student Health DocFind](#).

### Accessing Your Insurance Card

Insurance cards are not automatically mailed to students. Once you're enrolled in GW's Student Health Insurance Plan, you'll be able to print your insurance card and/or access your digital ID card by visiting [Aetna Student Health](#).

## Upcoming Events

### \*NEW EVENT!\*

Do you have questions as you prepare to travel to the U.S.? Are you looking for advice on GW's processes and procedures? Want to connect with a current GWSB international student to get their perspective? If so, then the optional **Fall 2022 Pre-Arrival Q&A Session on Thursday, July 21, 2022** (9-10am Eastern Time) is for you!

The Fall 2022 Pre-Arrival Q&A Session will start with a brief presentation covering topics like orientation, GW's COVID policies, and key information for your arrival in the U.S. However, the majority the session will be dedicated to an open Q&A with Elisa Becker (Program Associate for International Student Services), and two current GWSB students and members of the GWSB International Student Advisory Board (ISAB): Adiya Jaju (GMBA) and Arun Rajan (MSBA).

#### Thursday, July 21, 2022, 9-10am Eastern Time

*Fall 2022 Pre-Arrival Q&A Session*

Hosted by GWSB Global & Experiential Education

**Location:** Zoom - Link will be sent to registrants 1-2 business days before session.

[Register Here!](#)

The below-listed orientation sessions are **required** of ALL GMBA international students studying on an F-1 visa. These sessions are held in the month of August and will provide pertinent information for international students relating to immigration and the academic culture at GWSB.

#### Monday, August 1 - Friday, August 5, 2022

*GMBA International Runway*

Hosted by GWSB Global & Experiential Education

**Time:** Please plan on attending sessions from 9am - 12pm everyday this week.

**Location:** These sessions will take place both in-person and virtually. Additional information and agendas to follow soon!

[Register Here!](#)

**REGISTER NOW!**

#### Monday, August 8 - Friday, August 26, 2022

*GMBA Runway*

All GMBA students are required to attend GMBA Runway. Students will receive additional information about GMBA Runway in the coming weeks.

#### Tuesday, August 23, 2022, 10am-12pm

*ISO New International Student Orientation*

Hosted by the International Services Office (ISO)

**Location:** Lister Auditorium

[Register Here](#)

Copyright © 2022 GWSB. All rights reserved.

You are receiving this email because you are currently enrolled in a Master's program at The George Washington University School of Business. If you are receiving this message in error, please contact us immediately.

**Our mailing address is:**  
GWSB  
2201 G Street NW  
Duques Hall, Suite 550  
Washington, DC 20052

Share this email:



Manage your preferences | [Opt out](#) using TrueRemove®

Got this as a forward? [Sign up](#) to receive our future emails.

View this email [online](#).

2201 G st NW Suite 551  
Washington, DC | 20052 United States

This email was sent to .

To continue receiving our emails, add us to your address book.

[Subscribe](#) to our email list.