



Education, Global and Experiential <sbglobal@email.gwu.edu>

GWSB Pre-Arrival Newsletter Week 4: Finances

1 message

GWSB International <sbglobal@gwu.edu>

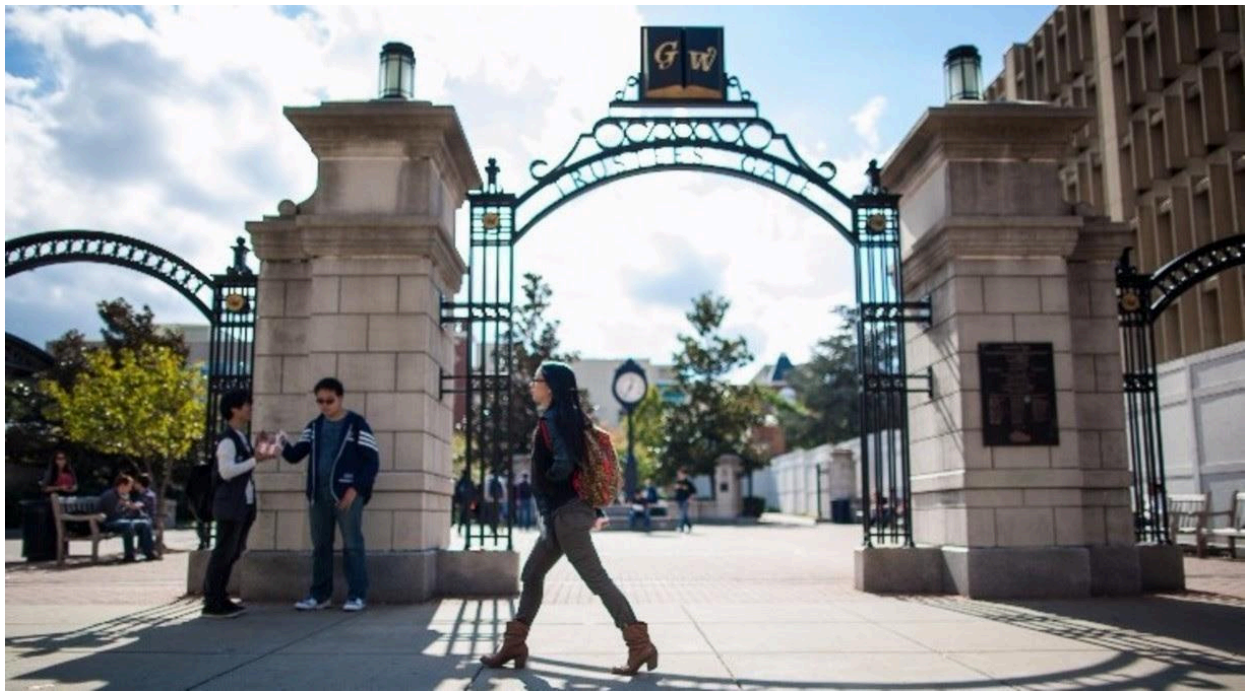
Thu, Dec 19, 2024 at 3:00 PM

Reply-To: sbglobal@gwu.edu

To: sbglobal@gwu.edu



Global & Experiential Education



G&EE Pre-Arrival Newsletter Four: Finances

Hello!

In this week's newsletter, you will find information about:

- Finances and Taxes
- Getting a Social Security Number and State-Issued Photo ID Card
- Upcoming Events

As always, if you have any questions, please email me at sbglobal@gwu.edu.

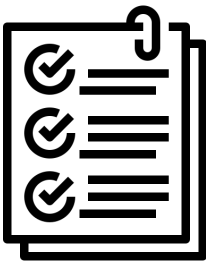
I look forward to meeting you all soon!

Best,
Elisa Boyea
Program Manager
International Student Services



Finances and Taxes

Opening a Bank Account



While in the U.S., you may decide that you want to open a bank account to deposit and withdraw money more easily. A bank account may also be needed for other things, like leasing an apartment.

You can apply for a checking account in-person without a Social Security Number (SSN) at some banks. Usually, to open a bank account without a SSN, you will need to have **two** of the following identifying documents with you:

- Valid **passport**
- And **one** of the following documents
 - GW University ID Card
 - Debit/Credit Card in your name

Remember, banks establish their own Customer Identification Policy to establish the identity of their customers, so they may ask for additional documentation to set up your account.

Additional Banking Resources

For additional information, please see the below resources:

- [Banking Options Near Campus](#) (On Page 2)
 - [Currency Exchanges & Passport Photo Locations](#)
-

Understanding and Paying Your GW Bill

GW's [Student Accounts Office \(SAO\)](#) handles student billing. On their website, the SAO provides general information about [your GW bill](#), [available payment methods](#), and [tuition rates](#).



When it comes to billing, GW:

- Bills **by semester**, according to registration.
- Will **email you** when your bill is ready.
- **Does not mail paper statements**; all billing is done electronically through the [Student Account eBill](#).

Students always have access to their Student Account eBill through [GWeb](#). Instructions on how to access the Student Account eBill system can be found on the Student Accounts Office website: [How to Access the eBill System](#).

Frequently Asked Billing Questions

When is my tuition payment due?

Payment is due on the [first day of the semester](#) on the Foggy Bottom Campus, or upon registration for any courses added after the first day.

What happens if I pay my bill late?

If an outstanding balance remains after the start of the semester, a monthly statement including [late payment fees](#) will be sent.

Students with outstanding balances will be unable to register for future semesters or receive grades, diplomas, or transcripts until the outstanding balance is paid.

How do I pay my bill?

You can pay your GW bill using any of the [payment methods](#) on the Student Accounts website, which are listed below.

- Using the eBill System - The eBill System allows you to pay your bill via:
 - Electronic Check
 - Credit Card
 - Bank Wire Transfer
- Check - Personal checks, cashier's checks, traveler's checks, and money orders are accepted.

I'm sponsored by a third party (i.e., government, private company, etc.) who will pay at least part of my GW bill. How does that work?

The Student Accounts Office accepts authorizations from third party sponsors to invoice the sponsor directly for authorized charges of the sponsored student. Information about sponsor authorizations can be found on the [Third Party Billing](#) webpage.

Have other questions? Email Student Accounts at sao@gwu.edu, or call at (202-994-7350).

Tax Support for International Students

In general, there are three types of taxation that may apply to international students while in the U.S.: Federal Income Tax, State Income Tax, and Social Taxes. International students receiving income from GW should arrange to meet with the GW Tax Department to discuss tax implications and complete the appropriate tax forms.

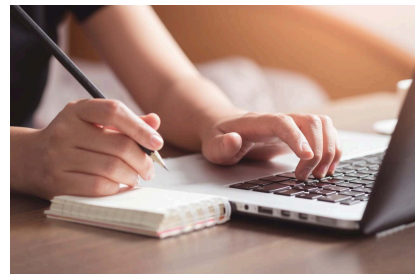
To learn more about taxes for international students, visit the [International Students and Scholars](#) section of the [GW Tax Department's website](#). For questions, contact the GW Tax Department via email (tax@gwu.edu) or phone (571-553-8313).

Applying for a Social Security Number

A Social Security Number (SSN) is a nine-digit number issued to people who are employed in the U.S. SSNs are issued by the Social Security Administration.

To be issued a SSN, international students must:

1. Be **fully checked-in** with the International Services Office (ISO).
2. Be **enrolled in a full course of study**.
3. Have **employment** - The Social Security Administration is currently not issuing numbers to students unless they can verify employment at the time of application.



Important Note: Social Security Numbers (SSNs) are **not** work authorization!

The ISO-authored [How to Obtain a Social Security Number for F-1 Students](#) resource includes helpful information about the locations of Social Security Offices near the GW Foggy Bottom campus, as well as the documents required to apply for an SSN.

You can learn more about types of employment permissible for international students on the ISO's website ([F-1](#) and [J-1](#)) or by contacting the ISO at iso@gwu.edu.

Getting a State-Issued ID Card

To obtain a U.S. Driver's License or State ID Card, you must visit the Department of Motor Vehicles (DMV) in the state in which you live.

1. For a general overview of the process, take a look at the ISO's [Obtaining a Driver's License/State ID](#) document.
2. If you live in **Washington, D.C.:** [D.C. Driver's License for Non-U.S. Citizens](#)
 - If you live in **Virginia:** [Exchanging a Foreign License for a Virginia License](#)
 - If you live in **Maryland:** [Exchanging a Foreign License for a Maryland License](#)



Please Note: When you go to the DMV, you must bring the originals of your documents - copies **will not** be accepted.

Orientations

The below-listed **mandatory** orientation sessions are **required** for ALL GWSB international students studying on an F-1 or J-1 visa.

Tuesday, January 7, 2025, 10:00am-12:00pm

ISO New International Student Orientation

Hosted by the International Services Office (ISO)

Location: Jack Morton Auditorium (805 21st Street NW, Washington, DC 20052)

[Visit the ISO's Website for More Information](#)

Tuesday, January 7, 2025, 1:30-4:00pm

Spring 2025 GWSB International Student Orientation

Hosted by GWSB Global & Experiential Education (G&EE)

Location: Duquès Hall, Room 151 (2201 G Street NW, Washington, D.C. 20052)

[Register Here!](#)

For questions, please email G&EE at sbglobal@gwu.edu

See You There!

PROGRAM-SPECIFIC ORIENTATIONS

Please contact your [academic department](#) for dates and times of program-specific orientation sessions

Follow Us!



Copyright © 2024 GWSB, All rights reserved.

You are receiving this email because you are currently enrolled in a Master's program at The George Washington University School of Business. If you are receiving this message in error, please contact us immediately.

Our mailing address is:

GWSB
[2201 G Street NW](#)
Duques Hall, Suite 550
Washington, DC 20052

[Manage](#) your preferences | [Opt Out](#) using TrueRemove™

Got this as a forward? [Sign up](#) to receive our future emails.

View this email [online](#).

[2201 G st NW Suite 551 | Washington, DC 20052 US](#)

This email was sent to sbglobal@gwu.edu.

To continue receiving our emails, add us to your address book.