



## Newsletter Two: Arrival in Washington, D.C.

Hello! This week's newsletter covers topics related to your arrival in Washington D.C., including immigration procedures and transportation:

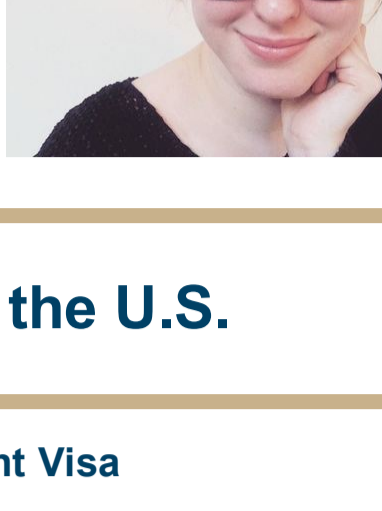
- Preparing to Enter the U.S.
- Arrival and Public Transportation
- Upcoming Events

As always, if you have any questions, please email me at [sbglobal@gwu.edu](mailto:sbglobal@gwu.edu).

I look forward to meeting you all in August!

Best,

Elisa Becker  
Program Associate  
International Student Services



## Preparing to Enter the U.S.

### Obtaining Your Student Visa

After you have received your I-20 or DS-2019 from GW, you must obtain your U.S. visa. To do this, contact the nearest U.S. Embassy or Consulate for information on specific visa application requirements, procedures and processing times.

The U.S. Department of State is responsible for issuing student visas. Requirements and procedures vary from country to country. However, be prepared to present at least the following documents to your U.S. Embassy or Consulate:

- The **I-20** (for F-1 visa) or **DS-2019** (for J-1 visa) issued by GW
- Your valid **passport**
- An original **letter of admission** to GW
- Original **financial documentation** in English. This documentation should match the funding section on your I-20/DS-2019.
- Evidence of **strong ties to your home country**. This should be a cultural, social, professional, or other aspect of your life that serves to bind you to your country of residence.

Be sure to contact the U.S. Embassy or Consulate and review their website to determine the necessary documents you will need to apply for your visa.

Due to COVID-related delays, please be prepared for longer than normal wait times. If you run into extensive delays that could interfere with your timely arrival to the U.S., please contact [sbglobal@gwu.edu](mailto:sbglobal@gwu.edu).

### Important Terms to Know

**SEVIS ID Number:** Your SEVIS ID number is located on the first page of your I-20 or DS-2019. It is the number beginning with an N.

**I-94 (Arrival/Departure Record):** This form officially determines how long an international student can remain in the United States.

- Students with an F-1 visa usually have their I-94 stamped "D/S" (Duration of Status), which means that the student can remain in this country for the time required to complete their studies, as long as the student follows all regulations in accordance with their student visa.

### When and How to Arrive

F-1 visa holders are permitted to enter the U.S. no more than 30 days prior to the report date listed on their I-20. This report date is located in item number five on your immigration document.

### COVID Considerations

Need a reminder about COVID-19 vaccine requirements?

- Visit the [vaccine page on GW's Coronavirus Response website](#) to see GW-specific requirements
- Visit the [CDC's Non-U.S. Citizen, Non-U.S. Immigrants Air Travel](#) page for general travel requirements and regulations if arriving in the U.S. by plane.

Additionally, your country may be subject to additional COVID-related entry restrictions or requirements, so be sure to check your Embassy's webpage for any extra requirements before you board your flight.

It is important that you enter the country on the proper visa type (F-1 or J-1). To do so, you must present the following to an immigration officer at the port of entry:

- Your passport
- Your U.S. F-1 or J-1 visa stamp for GW
- Your I-20 or DS-2019

If you enter the U.S. as a B-1 or as a B-2, or you enter on the Visa Waiver Program (i.e., with no visa), you will not be able to study until your immigration status changes. Please note, you will not be able to update your immigration status to student status while in the U.S.

If you forget an immigration document, the immigration officer may issue you a form I-515 (A), which is a temporary 30-day admission. If this happens, go to the International Services Office (ISO) as soon as possible. When you go to the ISO, please bring all of your immigration documents, including the form I-515 (A).

## Arrival & Public Transportation

### Checking-In at ISO

One of your first steps when you arrive on-campus should be to check-in with the ISO. ISO has a two-part check in:

1. The first step is the [Online Check-In](#), which can be completed through [ISOGateway](#) before you arrive.
2. After you land in the U.S., you need to complete the [e-check and In-Person Check-In Agreement](#), also through [ISOGateway](#).

### Getting to the Foggy Bottom GW Campus

Washington, D.C. is served by three major airports: Ronald Reagan National Airport (DCA), Washington Dulles International Airport (IAD), and Baltimore Washington International Airport (BWI).

Below is an overview of these three airports and the most economical transportation options from each. In addition to the information below, Travelers Aid or information desks located within the airports can provide extremely helpful information as well!

#### Ronald Reagan National Airport (DCA)

DCA is the closest airport to GW's campus, about 6 miles (9 km) away from campus. To get from DCA to GW's campus, you have the following options:

- **DC Metro:** Take the Blue Line to the Foggy Bottom/GWU Station.
- **Taxi/Uber/Lyft:** Costs between \$15 and \$25.

#### Washington Dulles International Airport (IAD)

IAD is located in Virginia, about 20 miles (30 km) from downtown Washington. To get from IAD to GW's campus, you have the following options:

- **Silver Line Express Bus + DC Metro:** Takes you to the Wiehle-Reston East Metro Station.
- **Super Shuttle:** Can be used for transportation to your place of residence. Must be booked in advance.
- **MetroBus 5A + DC Metro:** Goes from IAD to the L'Enfant Plaza Metro Station, with stops at the Rosslyn Metro Station and Herndon-Monroe Park and Ride.
- **Taxi/Uber/Lyft:** Costs between \$50 and \$100.

#### Baltimore Washington International Airport (BWI)

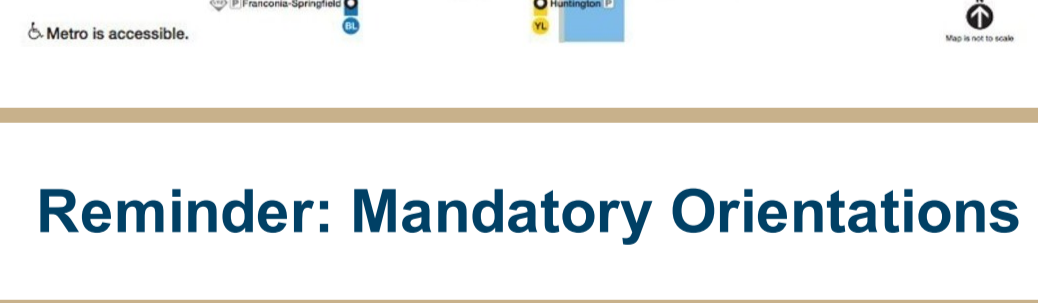
BWI is located in Maryland, about 33 miles (53 km) from Washington. To get from BWI to GW's campus, you have the following options:

- **MARC Train + DC Metro:** The Penn Line goes to Union Station, which is on the Red Line. Please Note: MARC Train service operates on Monday through Friday ONLY.
- **Amtrak Train + DC Metro:** Amtrak goes to Union Station, which is on the Red Line.
- **Taxi/Uber/Lyft:** Costs between \$100 and \$150.

### Getting Around Washington, D.C.

One of the many great things about Washington, D.C. is that there are many forms of public transportation!

- **Metro:** The D.C. subway system, referred to as the Metro, is a safe and inexpensive method of transportation throughout D.C., and parts of Virginia and Maryland. See a map of the D.C. Metro below!
- **MetroBus and the Circulator:** The MetroBus and the Circulator are both public bus systems.
- **Taxi and Uber/Lyft:** D.C. has many taxi options, and depending on where you want to go, taking either a taxi or rideshare like Uber or Lyft can be a convenient way to get around the city.
- **Campus Shuttles:** GW maintains three [shuttles](#) that go in between GW's campuses: 1) Vern Express, 2) VSTC Express, and 3) Wiehle Express.
- **Capital Bikeshare:** Capital Bikeshare is a program in the District that allows customers to rent bikes throughout the District and surrounding areas.



## Reminder: Mandatory Orientations

The below-listed mandatory orientations will provide pertinent information for international students relating to immigration and academic culture at GWSB.

These sessions are required of ALL GWSB international students studying on an F-1 visa.

**Tuesday, August 23, 2022, 10am-12pm**  
**ISO New International Student Orientation**  
Hosted by the International Services Office (ISO)  
Location: Lisner Auditorium  
[Register Here](#)

**\*UPDATED!\***  
**Thursday, August 25, 2022, 9am-12pm**  
**GWSB International Student Orientation**  
Hosted by GWSB Global and Experiential Education  
Location: To Be Determined  
[Register Here!](#)

**REGISTER NOW!**

### PROGRAM-SPECIFIC ORIENTATIONS

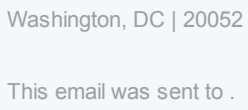
Accelerated MBA | Master of Science in Applied Finance | Master of Science in Business Analytics | Master of Science in Finance | Master of Human Resource Management | Master of Science in Information Systems Technology | Master of Science in Interdisciplinary Business Studies | Master of Science in International Business | Master of Science in Management | Master of Science in Project Management | Master of Science in Sports Management | Master of Science in Tourism, Hospitality, and Event Management

Please contact your specific department for dates and times.

Copyright © 2022 GWSB. All rights reserved.  
You are receiving this email because you are currently enrolled in a Master's program at The George Washington University School of Business. If you are receiving this message in error, please contact us immediately.

**Our mailing address is:**  
GWSB  
2201 G Street NW  
Duques Hall, Suite 550  
Washington, DC 20052

Share this email:



Manage your preferences | [Opt out](#) using TrueRemove®  
Got this as a forward? [Sign up](#) to receive our future emails.

View this email [online](#).

2201 G st NW Suite 551  
Washington, DC | 20052 United States

This email was sent to .  
To continue receiving our emails, add us to your address book.

[Subscribe](#) to our email list.