

## Welcome from G&EE

Hello! Congratulations on your admission and acceptance to the George Washington University School of Business (GWSB)! My name is [Elisa Becker](#) and I am the Program Associate for International Student Services in the [Global and Experiential Education Office \(G&EE\)](#) at the School of Business.

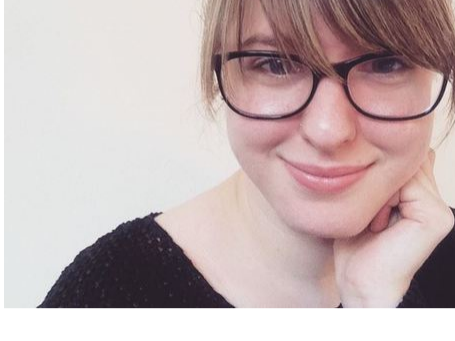
My team and I have communicated via email with each of you to ensure the issuance and receipt of your I-20 or DS-2019. I look forward to meeting you face-to-face, learning about your personal, academic, and professional goals – and helping you make the most out of your time at GW!

Here at the Global and Experiential Education Office, we aim to provide you with visa processing assistance, orientation and social programming, and general support. As a result, you will receive newsletters from our office starting now up to orientation. These newsletters will cover:

- Newsletter One (Today!):** COVID-19 Requirements, Housing & Orientation
- Newsletter Two:** Immigration, Arrival & Public Transportation
- Newsletter Three:** Campus Life & Health
- Newsletter Four:** Finances
- Newsletter Five:** Campus Life and Resource

As always if you have questions or concerns, please direct them to me at [sbglobal@gwu.edu](mailto:sbglobal@gwu.edu).

Best,  
Elisa Becker  
Program Associate  
International Student Services  
[sbglobal@gwu.edu](mailto:sbglobal@gwu.edu)

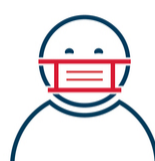


## COVID-19 Requirements

At GW, we have a clear objective: a comprehensive, in-person living and learning experience for our students, faculty and staff. We are offering students an on-campus experience, including in our classrooms, residence halls, laboratories, libraries and studios.



GW requires students, faculty, and staff to be **fully vaccinated and boosted** against COVID-19, unless they receive an approved exemption.



As of June 2022, **masks are required** indoors at all GW-owned and -operated facilities.



**Courses will be in-person.** Only those limited courses designated for hybrid or online modalities will have a remote component.



**Our classrooms, libraries, residence halls, offices and other spaces are safe** and ready for our community members to occupy.

As of November 8, 2021, **all non-citizen, non-immigrant travelers must be fully vaccinated** with an FDA- or WHO-authorized vaccine to travel to the United States by plane. Limited exceptions apply. As of November 2021, accepted vaccines include:

- Janssen/J&J
- Pfizer-BioNTech
- Moderna
- AstraZeneca
- Covaxin
- Covishield
- BIBP/Sinopharm
- Sinov

If you are **currently unvaccinated** and will be **unable to receive a vaccine prior to arriving in the U.S.**, please contact our team at [sbglobal@gwu.edu](mailto:sbglobal@gwu.edu) **immediately**.

For more information on travel requirements for non-immigrants, visit the [CDC's Non-U.S. Citizen, Non-U.S. Immigrants Air Travel page](#). Additional information and FAQs about GW's COVID-19 Response can be found on the [GW Coronavirus Response page](#).

## Housing

### First Steps

Graduate students have a number of different options for housing. As a first step, we encourage you to take a look at the following websites and documents:

- [GW Off-Campus Housing Website](#)
- ["Begin Your Search" Directory](#) - Includes links to apartment rental sites, local rental agencies, local publications featuring rental information, furniture rental sites, and temporary/short term housing options.
- [Housing Options for International Students](#) - Written by GW's International Student Community Ambassadors (ISCA), this guide provides helpful insight on common housing selections made by the international student community.
- [Off-Campus Student Affairs - Guide to Living Off-Campus](#)
- [Frequently Asked Questions for International Graduate Students](#) - Created by GW Off-Campus Student Affairs

At this point, we also suggest that you think about your "must have" list. What features and amenities are you unable to live without? What's nice to have, but not a requirement? This will help you decide which apartments to visit once you arrive in Washington, D.C. For example:

- How many **bedrooms** do you need to have? How many **bathrooms**?
- Does it matter if **pets** are allowed?
- Do you want private **outdoor space**, like a private balcony?
- Is it necessary for the apartment complex to have a **fitness center**? A **pool**?

### Neighborhoods

You've got the tools, now it's time to decide where you want to live!

First, we recommend learning about your new city and virtually exploring the many different neighborhoods in and around Washington, D.C. A broad overview of DC neighborhoods can be found [here](#), and below you will find information about some of the most popular neighborhoods in D.C., Virginia, and Maryland. The information includes average commute time to GW's Foggy Bottom campus, and average rent prices.

- [Foggy Bottom](#)
- [Dupont Circle](#)
- [Georgetown](#)
- [Capitol Hill / Eastern Market](#)
- [Adams Morgan](#)
- [Cleveland Park / Woodley Park](#)
- [Arlington, Virginia](#)
- [Alexandria, Virginia](#)
- [Silver Spring, Maryland](#)
- [Bethesda, Maryland](#)

### Making Decisions

Personal preferences are generally the deciding factors in choosing a home:

- Is **cost** a key issue? The further away from the city, the less expensive the housing.
- Does the neighborhood match your **lifestyle** and the type of community you want to live in?
- Does the neighborhood feel **safe** to you? The safety of Washington, D.C. neighborhoods can vary, as can people's comfort levels. You may want to check-out <https://dcAtlas.dcgis.dc.gov/crimecards/> for additional information regarding certain areas.
- Will you be using **public transportation**? Living in the city requires less travel time.
- Do you own a **car**? Parking outside of the city tends to be less expensive.

We *strongly* encourage you to visit any apartment you're interested in - photos can be deceiving, so make sure to check it out in-person! You can use the [Apartment Search Checklist](#) when visiting a house or apartment to be sure you find an apartment that meets your wants and needs.

#### Remember:

**No matter** where you decide to make your home, close to campus or further away, there are always tradeoffs!

### Help! I'm Feeling Overwhelmed!

Don't stress - everything will work out! In fact, the best advice we can give you? Be patient!

We know finding housing in a new city can be a daunting task, but new students go through this same process each year at GW and are able to find a place to live. It's exciting to move to a new city, and we hope you'll have fun in your search!

Sometimes talking to someone that's been in your shoes can help ease stress too. If you want to talk to someone that knows how you're feeling, contact the [GWSB International Student Advisory Board \(ISAB\)](#) - they're here to help!

### Legal Concerns?

If you have questions about tenant rights, legal issues, and/or signing a lease, you can always contact the [GW Off-Campus Student Affairs](#) office for assistance.

## Orientations

We recommend that you arrive in the US as early as possible but no earlier than 30 days prior to your program start date listed on your I-20. Arriving as early as possible will give you time to acclimate to the U.S. and Washington DC.

The below-listed **mandatory orientations** will be held in the month of August and will provide pertinent information for international students relating to immigration and the academic culture at GWSB.

These sessions are **required** of ALL GMBA international students studying on an F-1 visa.

#### Monday, August 1 - Friday, August 5, 2022

*GMBA International Student Institute*

Hosted by GWSB Global & Experiential Education

**Location:** These sessions will take place both in-person and virtually. Please plan on attending orientation sessions everyday this week.

**Additional Information and Registration Coming Soon!**

#### Monday, August 8 - Friday, August 26, 2022

*GMBA Runway*

All GMBA students are required to attend GMBA Runway. Students will receive additional information about GMBA Runway in the coming weeks.

Questions about GMBA Runway should be directed to the GMBA Program Team.

#### Tuesday, August 23, 2022, 10am-12pm

*ISO New International Student Orientation*

Hosted by the International Services Office (ISO)

**Location:** Lisner Auditorium

[Register Here](#)



### See You Next Week!

For any questions, email [sbglobal@gwu.edu](mailto:sbglobal@gwu.edu)!

