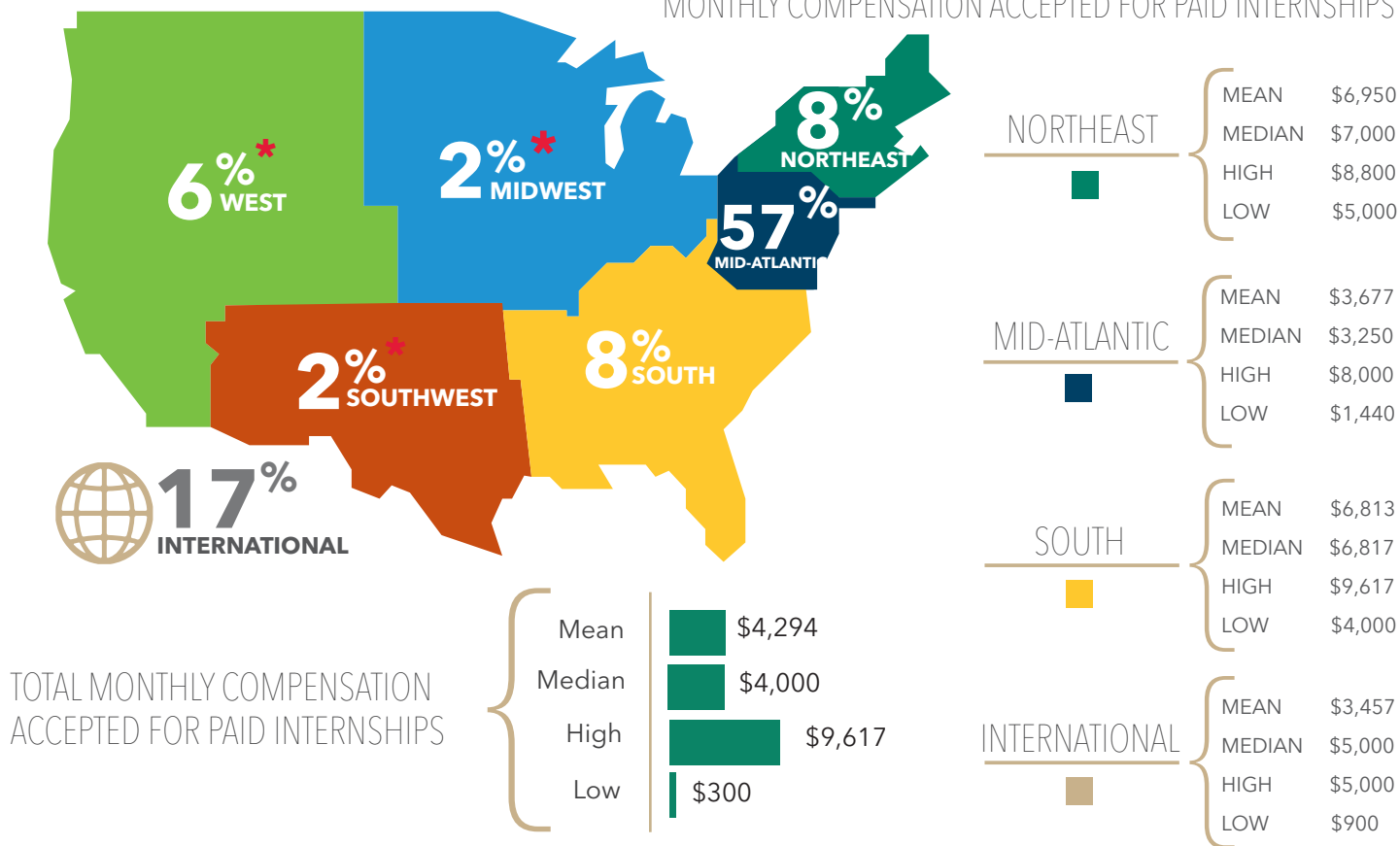


2017 INTERNSHIP ACCEPTANCES BY REGION

MONTHLY COMPENSATION ACCEPTED FOR PAID INTERNSHIPS



CLASS OF 2017 GMBA INTERNSHIP ORGANIZATIONS

ADP*	Delphos international *	McKesson
Apeiron Systems*	Delta Air Lines	Nationwide
Atlantic Council*	Distributed Sun, LLC	OPIC
Audi of America*	Glenmede Trust	PepsiCo*
Bank of america	Google*	Shiseido Group USA
BDO	Groupe Nduom*	SocialChorus
CEE Corporation	Hewlett Packard Enterprise	Sonoco
Center for Strategic and International Studies	Hobsons	Sunrise
Coca Cola Company	IFC*	Tegna
Collaborate UP*	Insight Property Group	Tgs Nortex*
Cozymeal	Kaboom*	The Mayhood Company
Dannon*	Lidl US*	The Office of Congressman Tim Walz
Deloitte*	M Powered Strategies	ThinkBox
	Marriott International, Inc.*	U.S. Commercial Service

*Hired an MBA graduate not holding permanent U.S. work authorization

CLASS OF 2017 GMBA INTERNSHIP STATISTICS

ACCEPTANCES BY FUNCTION

Function	% Accepting	Mean Monthly Salary	Median	High	Low
Consulting	25%	\$5,340	\$5,000	\$8,800	\$600
Marketing/Sales	25%	\$5,026	\$4,000	\$8,633	\$3,200
Finance/Accounting	18%	\$3,353	\$4,000	\$5,000	\$300
Other	16%	\$3,280	\$2,500	\$5,520	\$1,440
General Management	8%	N/A	N/A	N/A	N/A
Human Resources	6%	\$4,043	\$3,250	\$7,200	\$1,680
Operations/Logistics	2%	N/A	N/A	N/A	N/A

ACCEPTANCES BY INDUSTRY

Industry	% Accepting	Mean Monthly Salary	Median	High	Low
Financial Services	19%	\$3,568	\$4,000	\$6,400	\$300
Consulting Services	15%	\$4,587	\$4,710	\$8,000	\$600
Non-Profit	11%	\$2,170	\$2,100	\$2,800	\$1,680
Other Services	11%	\$5,250	\$5,000	\$6,800	\$4,200
Technology	8%	\$3,133	\$3,300	\$3,600	\$2,500
Consumer Products	6%	\$5,733	\$5,000	\$7,200	\$5,000
Manufacturing	6%	\$6,129	\$5,520	\$9,617	\$3,250
Education	4%	N/A	N/A	N/A	N/A
Government	4%	N/A	N/A	N/A	N/A
Hospitality	4%	N/A	N/A	N/A	N/A
Real Estate/Construction	4%	N/A	N/A	N/A	N/A
Pharma/Biotech/Healthcare	2%	N/A	N/A	N/A	N/A
Media/Entertainment	2%	N/A	N/A	N/A	N/A
Petroleum/Energy/Utilities	2%	N/A	N/A	N/A	N/A
Transportation	2%	N/A	N/A	N/A	N/A

N/A Fewer than three data points